

Household use only

01 Read 'Precautions For Safe Use' and use the the appliance properly.

02 After finishing reading the manual, keep it in a convenient location for future reference.

03 Do not use the blender abroad, which has a different power supply and voltage.

04 Any quality improvements are subject to change without notice.

Thank you for using our product.  
For proper use of this product, please read the instruction manual thoroughly before using this product.

# CONTENTS

03 Precautions For Safe Use

05 Parts Identification

06 Dial /Standby Mode

07 How To Assemble/How To Use (Heating Jar)

08 Blender Mode (Auto/Manual)

09 Heating Mode (Auto/Manual)

10 Cleaning Mode

11 How to Clean

12 Cleaning and Maintenance/Before Contacting Technical Service

13 How To Trim The Ingredients/Error Code

14 Product Parameters & Warranty

# Precautions for safe use

1. You should read <Precautions for safe use>.
2. You should follow <Precautions for safe use>.
3. Precautions are classified as the following.

Warning: Violating the labeling requirements may cause serious injury or death.



Caution: Violating the labeling requirements may cause serious injury or damage to the appliance.

## Warning



DO NOT PLUG IN OR UNPLUG WITH WET HANDS. It may cause electric shock or injury.



USE ONLY THE OUTLET RATED EXCLUSIVELY FOR AC 120V FOR 15A OR HIGHER AND GROUNDED. If the power cord is damaged, it may cause electric shock or fire. It may cause trouble or malfunction.



PLUG THE POWER CORD IN CORRECTLY AND PUSH IT TIGHT INTO WALL SOCKET. It may cause an electric shock or a fire.



DO NOT BEND, TIE, DAMAGE, PULL, PUT NEAR ANYTHING OF HIGH TEMPERATURE, PUT NEAR ANY HEAT SOURCE SUCH AS GAS OVEN, PUT HEAVY OBJECTS ON TOP OF IT, SQUEEZE INTO A NARROW PLACE, OR MODIFY THE POWER CORD.  
If the power cord is damaged, it may cause electric shock or fire.



IF THE SUPPLY CORD IS DAMAGED, IT MUST BE REPLACED BY THE MANUFACTURER'S ITS SERVICE OR SIMILARLY QUALIFIED PERSONS IN ORDER TO AVOID A HAZARD.  
If the power cord is damaged, it may cause electric shock or fire.



DO NOT CONNECT MULTIPLE ELECTRICAL APPLIANCES TO AN OUTLET AND USE THEM AT THE SAME TIME. USE A DEDICATED OUTLET.



DO NOT MOVE THE PRODUCT DURING OPERATION. DO NOT PUT HAND, TOOL, OR ANYTHING OTHER THAN INGREDIENTS INSIDE THE CONTAINER. It may cause electric shock or injury.



CHILDREN SHOULD NOT PLAY WITH OR USE THE APPLIANCE. CLEANING AND USER MAINTENANCE SHALL NOT BE PERFORMED BY CHILDREN. KEEP THE APPLIANCE AND ITS CORD OUT OF REACH OF CHILDREN.



APPLIANCES CAN BE USED BY PERSONS WITH REDUCED PHYSICAL, SENSORY, OR MENTAL CAPABILITIES OR LACK OF EXPERIENCE AND KNOWLEDGE IF THEY HAVE BEEN PROVIDED SUPERVISION OR INSTRUCTION CONCERNING USE OF THE APPLIANCE IN A SAFE WAY AND IF THEY UNDERSTAND THE HAZARDS INVOLVED.



DO NOT TOUCH THE SHARP BLADE WITH YOUR HAND. PLEASE USE A CLEANING TOOL, SUCH AS A CLEANING BRUSH, FOR CLEANING.



DO NOT USE THE PRODUCT IF THERE IS A FIRE HAZARD OR HIGH HUMIDITY. It may cause injury, failure, and electric shock or fire.

## Precautions for safe use



NEVER PLACE FINGERS, FORK, OR SPOON, ETC. IN THE MACHINE.  
It may cause injury or product failure.



DO NOT USE THE PRODUCT OUTDOORS.



WHEN THE PRODUCT IS IN OPERATION, DO NOT LIFT THE CONTAINER OR OPEN THE COVER.  
Hot water may spill out.



DO NOT ALLOW THE PRODUCT TO IDLE. IT MAY SHORTEN THE PRODUCT'S LIFESPAN.



PLACE THE PRODUCT ON AN EVEN AND HEAT-RESISTANT SURFACE FOR USE.  
Not doing so may cause injury or product failure.

ALWAYS UNPLUG THE APPLIANCE AFTER USE. Always disconnect the appliance from the power supply if it is left unattended and before assembling, disassembling, or cleaning. When unplugging the power cord, make sure to hold the power cord. Pulling the wire to unplug may cause electric shock or fire.



REMOVE THE CONTAINER ONLY AFTER THE BLENDER COMES TO A COMPLETE STOP.



DO NOT PUT WATER IN THE CONTAINER WHILE THE PRODUCT IS TURNED OFF AND COOLING DOWN. It may break the container.



LET THE PRODUCT TO COOL DOWN BEFORE CLEANING THE GLASS CONTAINER.  
Washing hot glass containers in cold water may break the glass.



THE BLADE IS NOT SEPARATED FROM THE GLASS CONTAINER. Please take cautions for safety.



THIS PRODUCT INVOLVES A PART THAT ROTATES AT A HIGH SPEED AND GENERATES NOISE DURING OPERATION. This is a normal and does not cause a problem while in use.



DO NOT WASH THE PRODUCT INAPPROPRIATELY. Clean the product only in the manner described in the user's manual by referring to p. 10–11 of the manual.  
Do not clean the product in any other manner.



THE AMOUNT OF WATER AND INGREDIENTS SHOULD BE KEPT ABOVE THE MINIMUM (700ml) LEVEL AND BELOW THE MAXIMUM LEVEL (Hot drink-1,200ML; Cold drink-1,750ML).  
If you fill up the container with water or food ingredients above the maximum level, the contents may overflow.



BEFORE USING THE PRODUCT, MAKE SURE THAT THE MAIN BODY, CONTAINER, AND COVER ARE ASSEMBLED CORRECTLY. Not doing so may cause injury, failure and electric shock or fire.



DO NOT PLUG IN OR UNPLUG THE POWER CORD WITH WET HAND. DO NOT INSTALL OR USE THE PRODUCT IN PLACES WHERE WATER CAN GET INTO THE PRODUCT, SUCH AS IN A SINK AND BATHROOM. THERE IS A RISK OF SHORT CIRCUITING OR ELECTRIC SHOCK.



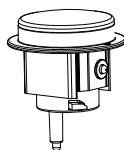
FOR CHILDREN, EVEN MINOR BURNS CAN BE VERY DANGEROUS. ADVISE CHILDREN TO DEVELOP A HABIT OF TAKING PRECAUTIONS WHEN HOT LIQUIDS ARE INVOLVED.



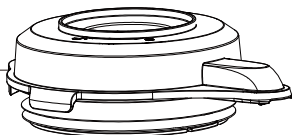
DON'T IMMERSE THE GLASS INTO THE WATER. DON'T IMMERSE THE BODY INTO THE WATER.

# Parts Identification

01 Small cover

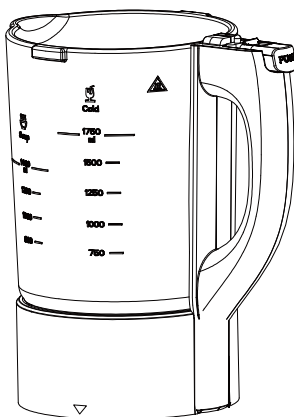


02 Cover



07 Push button

03 Glass

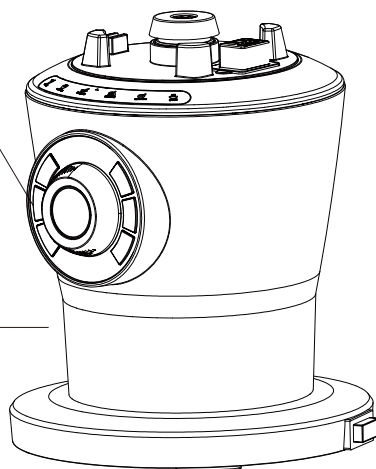


08 Handle

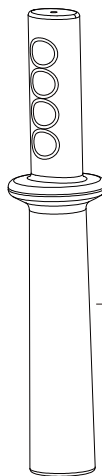
04 Jar base

05 Key/knob

06 Main body

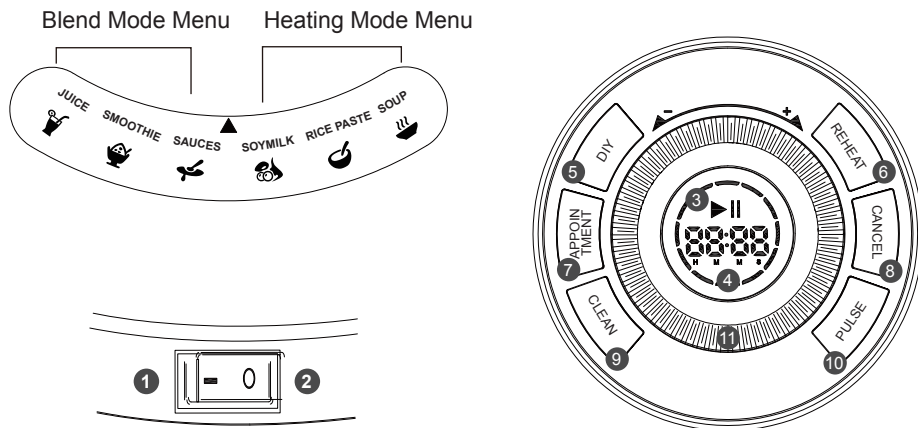


09 Blending rod



10 Power switch

# Dial



- ① Power ON    ② Power OFF    ③ Start/Stop    ④ Digital Tube    ⑤ DIY    ⑥ Reheating  
 ⑦ Appointment    ⑧ Cancel    ⑨ Clean    ⑩ Pulse    ⑪ Speed / Timer

## Standby Mode

### Power ON

- Flip the power ON switch.
- When you place the glass jar on the main body and turn on the power, all the LEDs will be on.

### Standby Mode

- The blender will turn on all LEDs when the power is on, show [- - - -] in the display area, and enter standby mode. The blender will also enter the standby mode after cooking is completed.

### Power-Saving Mode

- The blend will turn off all LEDs and enter the power-saving mode when there is no input for one minute in the initial state.

### Power-Saving/Standby Mode

- Press any button in the power-saving mode to switch to standby mode. Press the button for desired action to operate the blender.

### Power OFF

- Flip the switch to power OFF. - When you place the glass container on the main body and turn off the power, the all LEDs will be off.

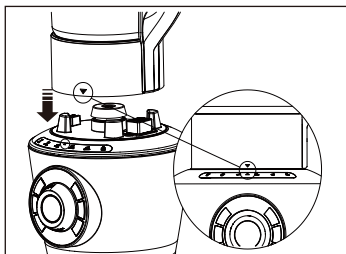
### Cancel to Stand by Mode

- Press the Cancel button during operation to enter standby mode.

# How To Assemble/How To Use (Heating Jar)

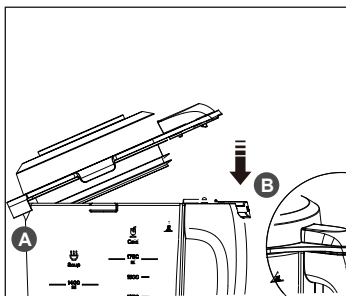
\* When you are using this product for the first time, the heat generated during use affects the internal coating of the motor, circuit board, and so on, and it may produce a certain odor. The smell will fade away naturally after use of the product.

## Main Body Assembly/How to Use



- Place the glass container on the main body so that its handle comes to the front right side and assemble them by aligning the container with the bump on the main body.
- Put the desired ingredients in the glass container.
- The blender will work when the parts are connected in a way that the sensor positions are aligned.

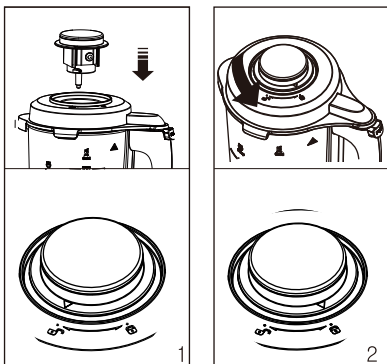
## Closing the Cover



- Insert the glass container's hook in part **A** of the cover.
- Lower part **B** of the cover and fit it into the handle's [PUSH] button. If you hear a click from the [PUSH] button, then it is properly assembled to the container.

\* It's helpful for this assembly to spray water around the cover seal.

## Placing Small Cover

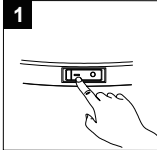
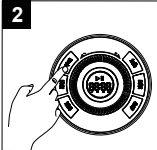

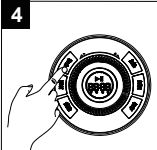

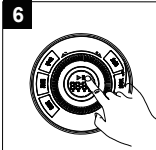


- Align to the center of the container cover and assemble it by turning it counterclockwise.
- When the small cover is placed, turn on the power and start cooking in the desired mode.

# Using Blender Mode

\*Assemble the glass container and body, put ingredients in the glass container, and assemble the glass container and the cover properly. Turn on the power.

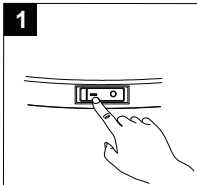
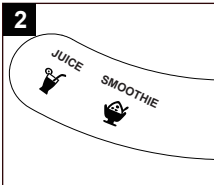
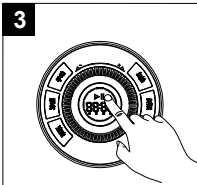
## DIY Mode

					
Turn on the power.	Press DIY key.	Turn the knob for the speed. (1-12 Speeds)	Press the DIY again for time adjustment.	Turn the knob and again for time adjustment.	Press ►► to run the blender.  *Pause feature

Press ►►, speed 1 for 120s.

Adjust speed during operation (Turn knob to adjust the speed, 1-12 speeds)

## Recipe Mode (Auto Mode)

		
Turn on the power.	Touch the recipe mode. Choose the recipe. (JUICE/SMOOTHIES/SAUCES)	Press ►► to run recipe mode. When cooking is completed, it will indicate completion with the alarm and turn to the standby mode.

## Cautions for Crushing Mode

\* When you crush dried ingredients, the crushed powder or crushed ingredient may burst out of the container. (If you are using the blender for crushing dried ingredients consecutively, it is recommended that you use the blender less than five times in a row when used for 1 minute each time).

\* When crushing ice into flakes, make sure the size of each ice cube is 20mm or less and the total weight is less than 200g.

\* In crushing mode, you can set the speed and time before the cooking mode begins.

- Speed Selection: dial control (see time/speed on digital tube)

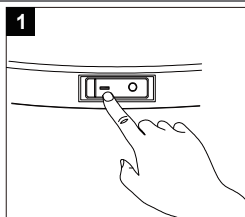
- Time Selection: dial control (see time/speed on digital tube)

**⚠ DO NOT ALLOW THE PRODUCT TO IDLE.**  
IT MAY SHORTEN THE PRODUCT'S LIFE OR CAUSE HARM.

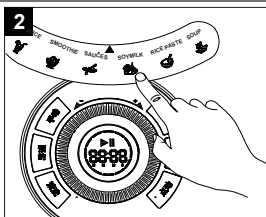
# Using Heating Mode

- \* When chose the appointment mode, be careful about perishable ingredients.
- \* You must properly assemble the cover and small cover before using heating mode.

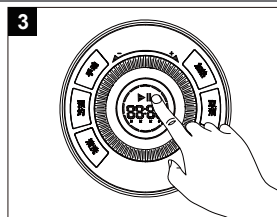
## Recipe Mode (Auto Mode)



Turn on the power.

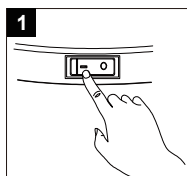


Touch & choose the recipe mode.  
(Soumilk/Rice paste/Soup)

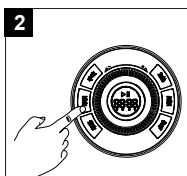


Press ▶|| button to start auto mode. When cooking is completed, it will indicate completion with the alarm and turn to the standby mode.

## Appointment Mode (Heating Recipe)



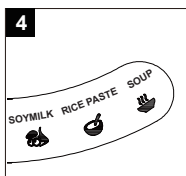
Turn on the power.



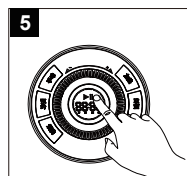
Choose appointment mode.



Turn knob to adjust time.

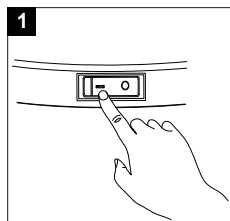


Touch and choose the recipe.

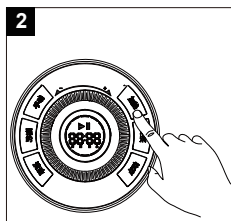


Press ▶|| button to start auto mode. When cooking is completed, it will indicate completion with the alarm and turn to the standby mode.

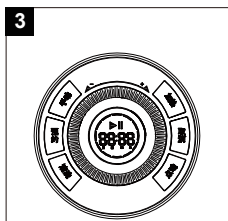
## Reheat Mode (Manual)



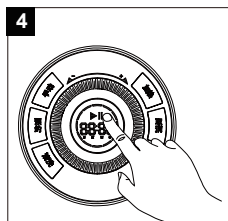
Turn on the power.



Press reheat key.



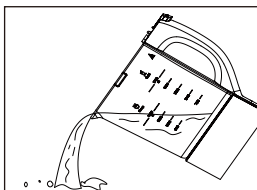
Adjust temperature by turn the knob  
\*Temperature setting:  
50–100 °C



Press ▶|| button to start by turn the knob.auto mode. When cookingis completed, it will indicate completion with the alarm and turn to the standby mode.

# Cleaning Mode

## Before Using the Cleaning Mode

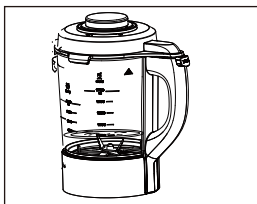


01

Wash the inside of the container lightly with water.  
\*Take precautions not to let water get into the bottom of the glass container that directly comes in contact with the main body.

**⚠** Do not immerse the glass container in any liquid.

## Using Heat-Cleaning Mode



01

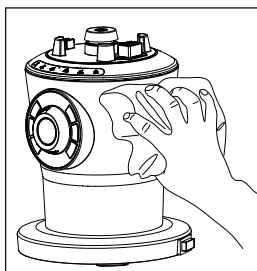
Fill the glass container with 700–1000ML of liquid.  
Place the glass container on the main body and put the container cover and small cover on correctly.

02

Power on ►|| then press button to clean for one minute.

- \* If the blade is not completely clean after washing, never put your hand in the glass container to clean the blade. Use a cleaning tool to clean the blade.
- \* The blade is not separated from the glass container. Please take safety precautions.
- \* The contents inside the container are very hot after the heat-cleaning mode. Please take precautions when emptying the contents afterwards.

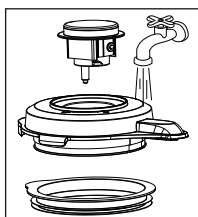
## Cleaning the Main Body



- \* Turn off the power first and unplug the power cord.
- \* Wipe the body with a dampened and squeeze-dried cloth or a soft sponge.
- \* Do not let any water get into the main body.

**⚠** Don't immerse in any liquid.  
Don't flush under the tap directly.

## Cleaning the Cover/Small Cover



- \* Remove and clean the container cover, disassemble the cover, small cover and cover sealing first, then clean. Clean and dry first, then assemble.

# Cleaning and Maintenance

- Unplug the power cord.
  - Take precautions not to let any water get into the main body or on the power cord.
  - Clean the glass container with a soft cloth or sponge.
  - The rubber packing can be separated and washed.
  - The glass container can be washed with water. In ordinary cleaning mode, fill the glass container with enough water to immerse the blade and run on the crushing mode to clean the container. In heat-cleaning mode, fill the glass container with enough water to immerse the heating rod in water and run in the cleaning mode to clean the container.
  - After washing, place the glass container upside-down and let it dry.
  - Clean the residue with a dry cloth.
- Caution:** Do not put your hand into the area with the blade to clean the area after auto cleaning. Make sure you remove the power cord and use a tool such as the cleaning brush to clean inside the container. It causes abrasions.
- Do not leave the container in water. It may rust the product or impact the performance.

# How To Trim The Ingredients

- Put liquid ingredients (water, milk) and soft ingredients in the glass container first and hard ingredients or ice and so on in later.
- Prepare ingredients into appropriate sizes by referring to the recipe book.
- It is recommended that you use frozen fruits after thawing.
- Do not put things that are not appropriate for eating in glass containers.
- If you use the blender without the filler cap, the contents may come out of the container. Place the filler cap on properly before use at all times.
- Persimmons, peaches, plums, apricots, cherries (cherry, autumn olive), and prickly pears are fruits with solid seeds that are hard to chew and swallow. Hard seeds can stop the motor and break parts. You must remove seeds before use.
- For vegetables and fruits, such as watermelons, melons, oranges, grapefruits, and lemons, prepare them by taking the peel off and cutting the flesh into appropriate sizes.

# Fault analysis and the elimination

## The power is not on.

- Make sure the power cord is properly plugged into the electrical outlet.
- Make sure the power switch on the front side of the main body is set to "ON."
- Make sure that the glass container is properly positioned at the top of the main body (refer to p. 7)

## The crushing feature is not working.

- The blender does not work if the cover is opened.  
Make sure that the container cover is properly connected.
- The blender may stop if there are too many ingredients or if the ingredients are too thick.  
Adjust the amount/size of ingredients and try again.
- The blender may stop when the motor is overheated. Please let it rest fully and try again.

## The heating feature is not working.

- Make sure that the heating rod's terminal is properly placed on the main body.
- Make sure that the heater's switch on the front of the main body is set to "ON."
- The blender may not work if the heating rod is not correctly screwed into the container cover.  
Insert the heating rod and turn it counterclockwise to connect to the cover.
- If the temperature of the contents is high (90°C or higher), it may not operate initially.
- Check the contents. Cooking below the minimum heating temperature may result in lower quality.

# Error Code

- E02** The cover/handle is not assembled.  
- Assemble the cover and handle properly.  
- If it still display E02, please consult customer service.
- E03** The temperature of the cup-bottom exceeds MAX temperature.  
- Please clean the cup-bottom.  
- If it still displays E03, please consult customer service.
- E04** The initial capacity exceeds the MAX capacity.  
- Please adjust the contents under the MAX capacity line.
- E05** The contents' temperature exceeds MAX temperature.  
- Please cool down the contents.
- E11** NTC fault  
- Assemble the glass jar and main body properly.  
- If it still displays E11, please consult customer service.

## Product Specifications

● Product name	dhdh solw blender	● Cord length	1.0m
● Product type	PBL110-A	● Fuse	15A
● Rated voltage	120V	● Motor	AC motor
● Rated frequency	60Hz	● Weight	8kg
● Rated power	1200W/1000W(heater)	● Outside size	330(L)x305(W)x520(H)mm
● RPM	30,000rpm		

**Important :** For better protection of your purchase, fill out and mail this form to a local distributor where you purchased the appliance and keep the original receipt.

## Warranty

● Product name :	● Customer name :
● Product type :	● Supply :
● Purchase date :	● Purchase site :
● Address :	

Provides warranty for five(5) yeas for the motor and two (1) years for the other parts from the date of purchase by the original purchaser. Coverage is valid only with proof of purchase from an Authorized Local Distributor. (No international warranty is available.) This warranty does not apply to damages caused by accident, misuse, abuse, commercial use, alteration, failure to follow operating instructions, or damage caused by parts. Damages caused by transportation must be claimed with carrier. Please check the bottom of your product for a sticker with a barcode. This barcode sticker helps verify a genuine product and identify the product manufacturing date. For service and assistance with technical difficulties, please contact our local customer service center.